

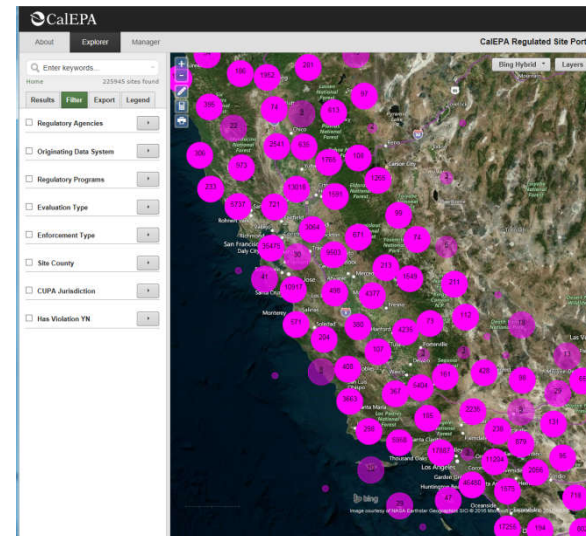
CalEPA Regulated Site Portal - Introduction

The California Environmental Protection Agency (CalEPA) has implemented a website that is capable of collecting and housing environmental data from many diverse sources across its Boards, Departments, and Office (BDOs) and is expandable to other environmental agencies. The CalEPA Regulated Site Portal provides a modern, intuitive interface allowing users to search for items of environmental interest using both geospatial (map-driven) and tabular (criteria-driven) approaches. Query results can be viewed online, printed as a report, or exported for use in further analytical activities.

The Project: A Holistic View

Most agencies employ many different information systems designed to meet the specific needs of their program area, addressing regulatory requirements and organizational structure. This has the effect of making it difficult for the agency to connect these systems and understand what is taking place at a particular location across the spectrum of environmental interests. Internal and external stakeholders need a more holistic view of the information regarding regulated activities occurring at any given location across the state.

A key feature of CalEPA Regulated Site Portal is its capability to identify, reconcile, and de-duplicate point-source site data. Locations that are regulated by multiple environmental programs will typically appear in many supporting regulatory systems, and as a result may be represented multiple times in a mapping tool. CalEPA Regulated Site Portal's sophisticated automated system can reconcile most of these duplicates, giving a holistic view of regulated activities at a single location.



Current Data Sources

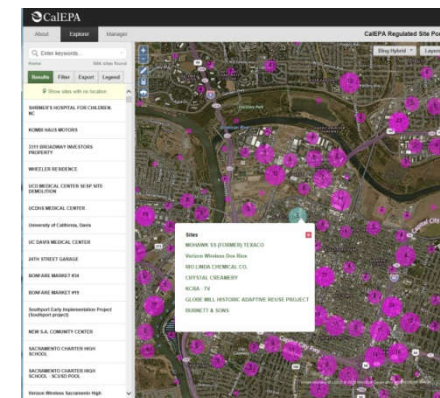
CalEPA identified an initial set of five data sources:

- **CERS** – The California Environmental Reporting System was developed by CalEPA to support the reporting of information by regulated businesses and Certified Unified Program Agencies (CUPAs) pertaining to hazardous materials and hazardous waste throughout the state.
- **EnviroStor** – Developed for the Department of Toxic Substances Control, this database contains information pertaining to state and federally listed cleanup sites, along with hazardous waste permitted and corrective action facilities.
- **GeoTracker** – Developed for the State Water Resources Control Board, this database contains information about impacted groundwater sites within the state, such as leaking underground storage tanks, cleanup sites, and permitted facilities such as landfills and operating underground storage tanks facilities.
- **CIWQS** – The California Integrated Water Quality System (CIWQS) was developed by the State Water Board to manage permitting, compliance and enforcement activities related to sites which discharge to surface water (or otherwise affect surface water quality) throughout the state.
- **TRI** – The Toxics Release Inventory (TRI) is a federal database that contains detailed information on nearly 650 chemicals and chemical categories that over 1,600 industrial and other facilities in the state manage through disposal or other releases, recycling, energy recovery, or treatment. The data are collected from these facilities by US EPA. The collected data is exchanged to CalEPA and updated automatically through the CalEPA exchange node.

Functional Capabilities

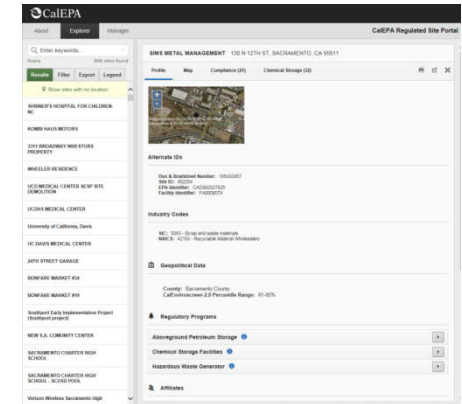
Data Inquiry

The data inquiry function is a browser-based web application used to access the harmonized dataset housed in the CalEPA Regulated Site Portal data warehouse. Using the data inquiry module, queries can be formulated using either tabular data (names, classifications, etc.) or by using the built-in mapping interface. This flexible inquiry user interface supports highly targeted querying (e.g. locations with particular properties in a small geographical area), but can also be used very effectively in a 'browsing' mode that allows users to zoom in and out and apply filters in a style that is similar to other popular map-driven web applications.



Detail Profile Information

Sites of interest resulting from a query can be further explored by viewing their profile. The profile for a site is a display of more detailed information on the specifics of the site, usually covering geopolitical data, features of interest at the site, known permitted activities, and individuals or organizations with an interest in the site. The profile page can be customized to show different data, based on the type of site that is shown. In addition to regulated site activities, CalEPA Regulated Site Portal is capable of providing agency staff with access to compliance and enforcement related information for a site through the Compliance tab in the profile. Users will know if the site has compliance issues for other program areas, providing better awareness and oversight for their program area of concern.



Layering Information

Information can be filtered and layered to provide a picture of impacts from many sources. CalEPA Regulated Site Portal includes the environmental loading information from CalEnviroScreen, flood information from FEMA, water diversion points, geopolitical boundaries, and more. The ability to quickly and easily see where facilities are in comparison to these layers of information can provide a clear picture of risk, guidance on who to contact, and help in many other decisions. The picture shows the 100 year flood zone around the San Francisco Bay and land disposal facilities in the vicinity.

